

MEASURING FLOOR USABLE AREA

FLOOR USABLE AREA shall be computed by measuring the area enclosed between the FINISHED SURFACE of the *OFFICE AREA* side of corridors and the *DOMINANT PORTION* and/or *MAJOR VERTICAL PENETRATIONS*. *BUILDING COMMON AREAS* are considered to be part of *FLOOR USABLE AREA*. No deduction shall be made for columns and projections necessary to the building. Where alcoves, recessed entrances or similar deviation from the corridor line are present, *FLOOR USABLE AREA* shall be computed as if the deviation were not present.

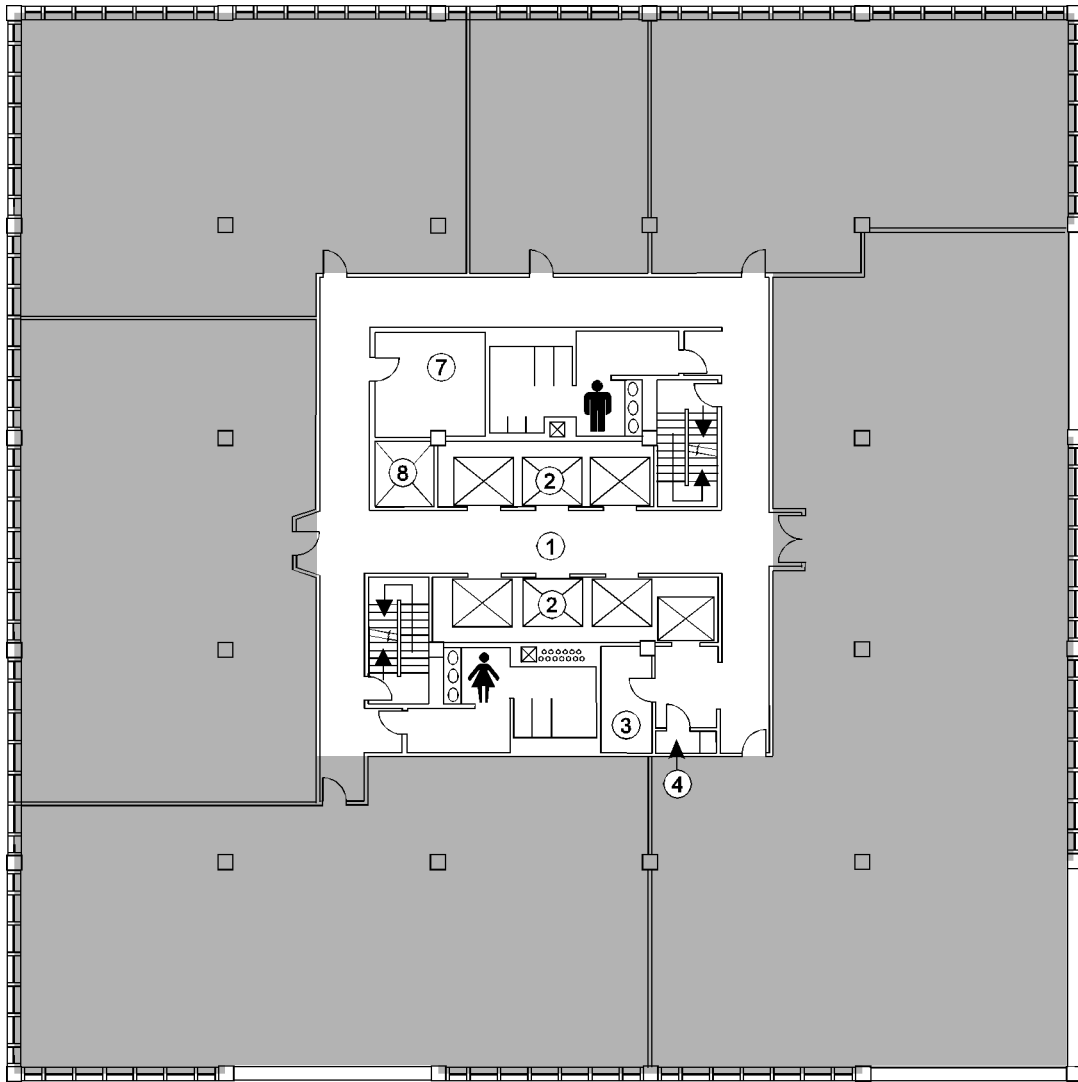


ILLUSTRATION OF *FLOOR USABLE AREA* FOR A TYPICAL UPPER LEVEL FLOOR

- | | | |
|------------------------|---------------------|----------------------------|
| 1 Lobby | 8 Ventilation Shaft | 14 Exercise Club |
| 2 Elevator | 9 Trash Dumpster | 15 Exit Corridor |
| 3 Electricity | 10 Loading Dock | 16 Retail Service Corridor |
| 4 Janitor | 11 Electrical Room | 17 Store Area |
| 5 Fire Command | 12 Fire Pump | 18 Security |
| 6 Building Maintenance | 13 Vending Machines | 19 Restaurant |
| 7 Fan Room | | |